



HOME LEARNING

YEAR 5

08/07/2020

Morning Message

Meeting ID: 751 802 3376

Good morning Year 5,
Over the next two days in English, you will be writing the main paragraphs of your letter to your new teacher. I know your new teachers are extremely excited to read them! In maths you will be converting units of capacity. Happy learning 😊

Yesterday's anagram

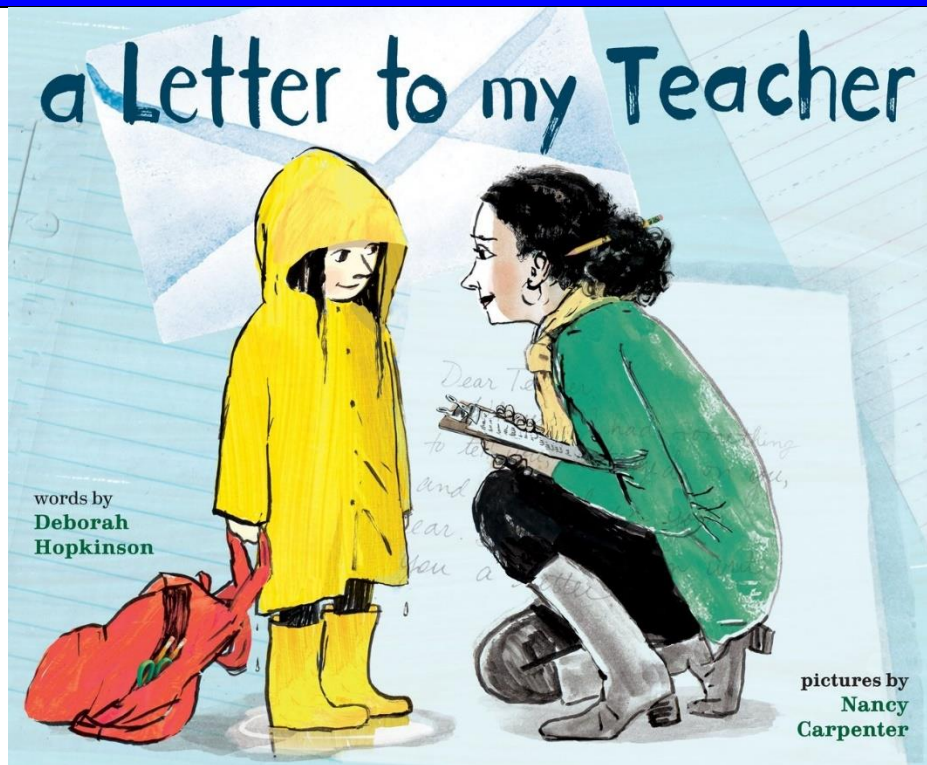
hedgehog

Today's anagram

firerra

Have a lovely day,
Ms Gayer and Mr McCann

This week's Pictures



Writing

Wednesday and Thursday LO: to write the body of a letter

Using our plans from yesterday, we are going to write 3 detailed paragraphs about:

- our interests outside of school
- our interests in school
- what we are looking forward to next year

Try to make it interesting for your teacher to read! Maybe you could include some interesting facts about yourself or the world?

At the end of your letter, sign off. We do not want our letter to be too serious so any of the following would be fine:

- See you soon
- Best wishes
- Can't wait for next year
- Have a lovely break

Or maybe you can think of your own?

Reading

Day 3 – Teacher questions

Remember to support all your answers for between the lines and beyond the text questions with evidence from the extract.

On the lines

1. Make a list of the things the monster damages as it approaches.
2. In verse 4, what evidence is there that the monster means to do something bad?

Between the lines

1. Which word in the final paragraph suggests that Conor might still be in a dream?
2. What is it that destroys the monster?

Beyond the text

1. What is your impression of Conor at the start of the poem, compared to Conor? Use two pieces of evidence to back this up.
2. Does this poem remind you of anything else you have seen/read?

A Monster Calls

Conor's Nightmare - THE nightmare - stalked his mind;
The wind laughed: sudden - short - breaths;
Sweat trickled as he thrashed like the sea.

Conor awoke.

Awoke into the nightmare.

The nightmare beyond his bedroom window.

Out in the cold gloom; depths of the garden...

A crack in the soil - black, tearing wound

Forced apart by a gnarled hand of twisted twigs.

A form, a huge shape; a knotted, mangled inhuman giant.

Red eyes glared. Mouth dripping dank hatred.

It stepped forward.

Trees were thrown aside; arms flail and destroy.

Shed crushed like an eggshell;

Earth retreating in trembling thuds;

Leaves shiver, wildlife panics -

Closer - Closer - CLOSER!

Baleful beady eyes and a hellish leering maw.

The spotlight moon shone coldly on the scene
A silver, sardonic skull;
A frozen grimace;
An audience staring at the monster,
Pressing its vine-tangled arms against the house.
The monster peered in the window. Smiling. Hungry.

The moon mesmerises. The monster speaks.
Its voice pierces his mind, body, soul.
“Come with me. You are now *mine!*”
Conor gasps. Conor reels in a hard breath: Conor becomes steel.
“No! NO! I’m not scared of you anymore!”
Fire explodes in the monster’s heart. Ashes fly to the winds.

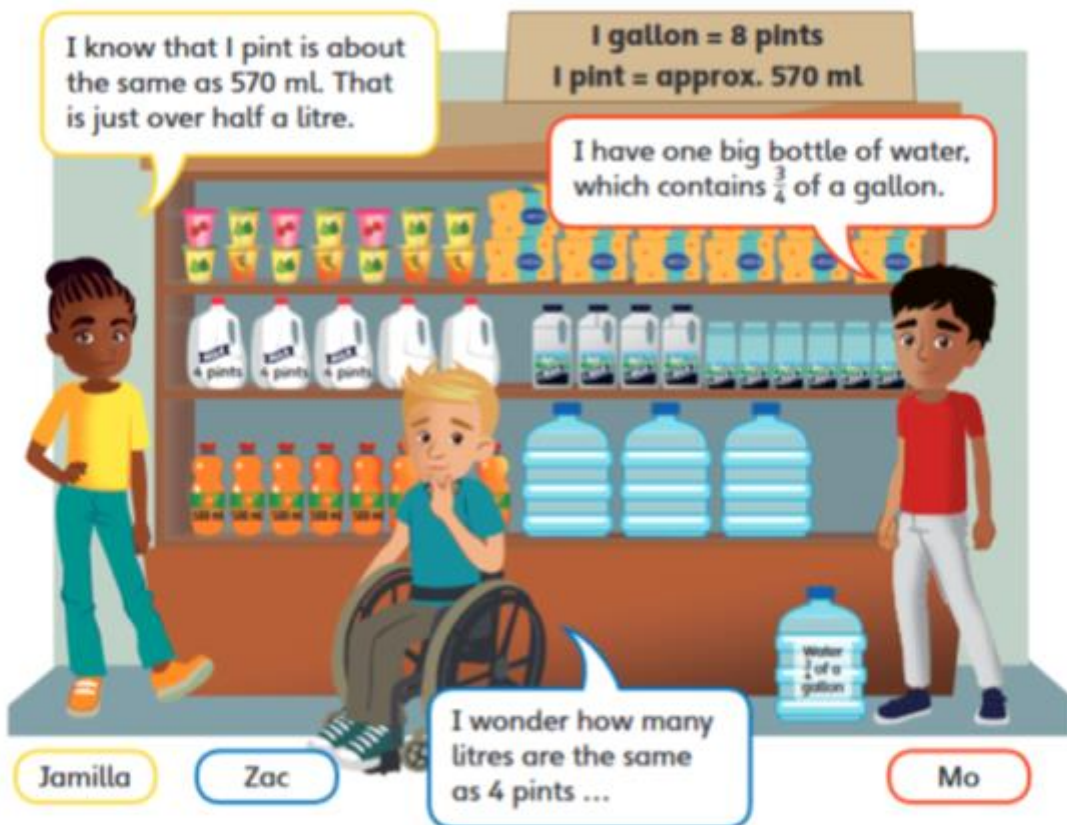
Maths

Lesson 7 – Imperial units of capacity

As well as measuring length and mass we also need to know how to measure capacity... Today, we will be looking at imperial units of capacity. We will come across the terms pints and gallons, convert between them and use approximations to convert from imperial to metric units

Key vocabulary: imperial units, metric units, pint, gallon, millilitre, litre, convert, approximately, capacity

Discover



- 1 a) How many litres are approximately equal to 4 pints of milk?
- b) How many litres of water does Mo have?

Share

a) Pints and gallons are imperial units of capacity.

4 pints			
1 pint	1 pint	1 pint	1 pint
570 ml	570 ml	570 ml	570 ml

$$\begin{array}{r} 570 \\ \times 4 \\ \hline 2280 \\ \hline \end{array}$$

I am going to use short multiplication to find the total in millilitres. Then I will need to convert into litres.

Th	H	T	O	.	Tth	Hth	
2	2	8	0	.			ml
			2	.	2	8	l

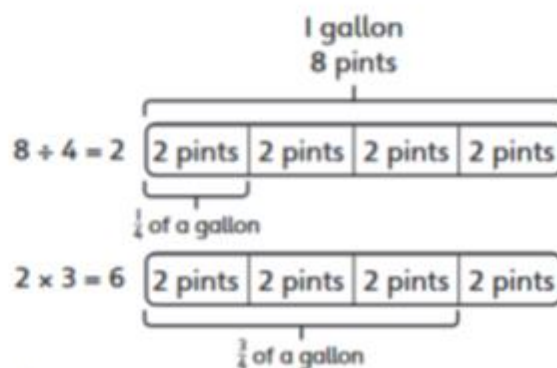
$$2,280 \div 1,000 = 2.28$$

2.28 litres are approximately equal to 4 pints of milk.



b) $\frac{3}{4}$ of a gallon = 6 pints

$$\begin{array}{r} 570 \\ \times 6 \\ \hline 3420 \\ \hline \end{array}$$



Mo has 3,420 millilitres of water.

$$3,420 \div 1,000 = 3.42$$

Mo has 3.42 litres of water.

Think together

1 a) This water container holds 5 pints of water.

Approximately how many litres is this the same as?



1 pint	1 pint	1 pint	1 pint	1 pint
<input type="text"/> ml	<input type="text"/> ml	<input type="text"/> ml	<input type="text"/> ml	<input type="text"/> ml

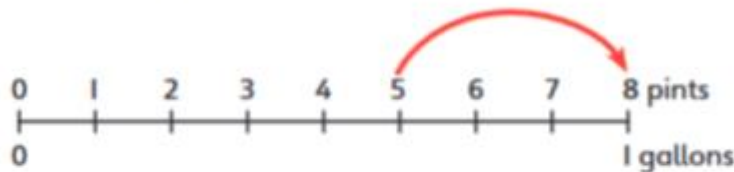
$5 \times \text{[]} = \text{[]}$

$\text{[]} \div 1,000 = \text{[]}$

5 pints are about the same as litres.

$$\begin{array}{r} \times \quad 5 \\ \hline \hline \end{array}$$

b) What is the difference between the capacity of the container and 1 gallon? Write your answer in litres.



$$\begin{array}{r} 5 \ 7 \ 0 \\ \times \quad \quad \quad \\ \hline \hline \end{array}$$

pints is the difference.

millilitres is the difference.

$\text{[]} \div 1,000 = \text{[]}$

litres is the difference.

2 Is half a pint of milk more or less than a 330 ml can of lemonade?

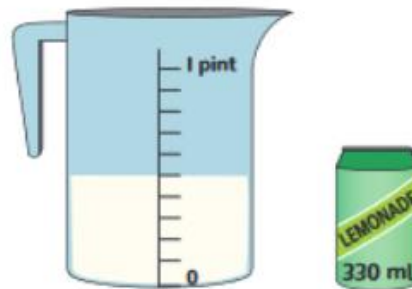
1 pint is approximately ml.

$$\square \div 2 = \square$$

Half a pint is approximately ml.

ml is _____ than 330 ml.

So half a pint of milk is _____ than a 330 ml can of lemonade.



3 Can you fill up the bucket using the water in the container?

Will there be any left?



1 gallon = 8 pints

1 pint = approximately 570 ml

I gallon is 570 ml, so there is not enough water in the container to fill the bucket.

That is not right! You need to use the number of pints in a gallon to help.



CHALLENGE

Now complete pages 129–131 in your power maths books.

Thursday: Go on the Mathletics website to complete the tasks that have been set.

<https://www.mathletics.com/uk/>

Weekly Spellings

This week we will be learning spellings for the year 5 list of words to know. Please practise learning the words every day by putting the words in sentences and get an adult to test you on Friday.

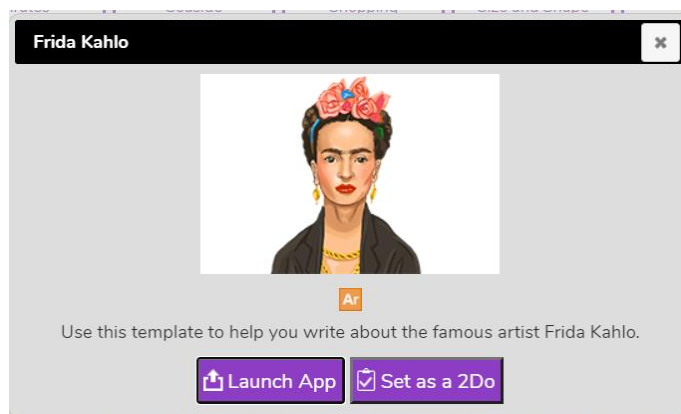
e.g. The teacher would often exaggerate her movements so we could see them more clearly.

accommodate
embarrass
persuade
accompany
environment
physical
according
equipment
prejudice
achieve
especially
privilege
aggressive
exaggerate
profession
amateur
excellent
programme
ancient
existence

Foundation Work (for the week)

Art– due Friday at 12pm

This week we are going to be doing an art topic. You will be researching Frida Kahlo, who is considered to be one of Mexico's greatest artists. Your task is to create an information text detailing information about Frida Kahlo. Enjoy 😊



Diary

Write a diary of what work and activities you did today. Remember to include your emotions and opinions.