

# Knowledge Organiser – Incarnation

## Assessment Question: How do art and music convey Christmas?



**Title:**  
Incarnation  
(1989)

**Artist:**  
Fernando Ariziti

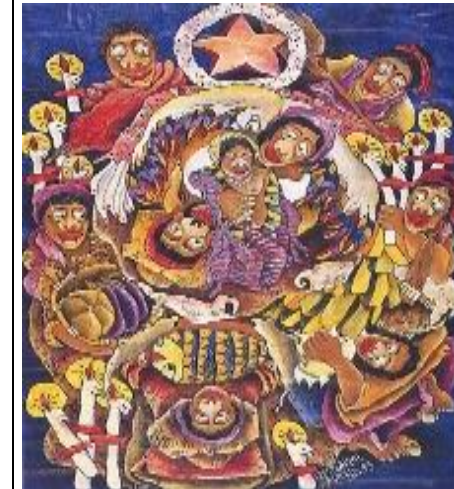
**Origin:**  
Mexico/SUA



**Title:**  
4am Madonna  
(1994)

**Artist:**  
Antonia Rolls

**Origin:**  
United Kingdom



**Title:**  
The meaning of  
Christmas (1995)

**Artist:**  
Kristoffer Ardena

**Origin:**  
Philippines

### Key Vocabulary:

- **Incarnation:** Jesus is God in the flesh, and that, in Jesus, God came to live among humans.
- **Theology:** where beliefs come from, how they have changed over time, how they are applied and how they relate to each other.
- **Nativity:** The birth of Jesus celebrated by Christians at Christmas
- **Sacred:** Something that has been marked off for some religious purpose, whether being for a ritual or devotion. Believers also use the term to mean God himself.
- **Secular:** Not having any connection to religion.
- **Religious:** Something or someone connected to a religion.
- **Christmas carol:** Songs sung at Christmas that tell the Nativity story.

### The themes that appear in the carol 'In the bleak midwinter' is as follows:

- Joy.
- A mother's love.
- Nature.

### The history behind the Christmas carol:

- Over the years, the word carol changed its meaning to refer to a particular kind of song which developed into religious songs about Christmas.
- Christmas carols are songs sung at Christmas that tell the Nativity story and central beliefs associated with the festival of Christmas.
- Many Christmas carols were written for a special purpose, often to accompany performances of religious dramas dating from medieval times.
- The tradition of carol singing – singing in the street and going from door to door is a very old custom of Great Britain going back to the middle ages. In those times it would be the poor that would go singing in seek of food, drink or money. Today people go carol singing to collect money for charity.

### In the bleak midwinter:

"In the Bleak Midwinter" is a popular Christmas carol that was written by Christina Rossetti in the 19th century. Its lyrics poetically describe the birth of Jesus and the scene of His nativity. In verse one, Rossetti describes the physical circumstances of the Incarnation in Bethlehem. In verse two, Rossetti contrasts Christ's first and second coming. The poet very artistically and vividly shows how and when Christ came into this world.

