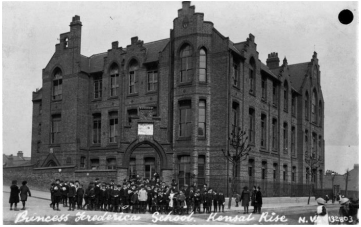


Princess Frederica of Hanover
1848-1926



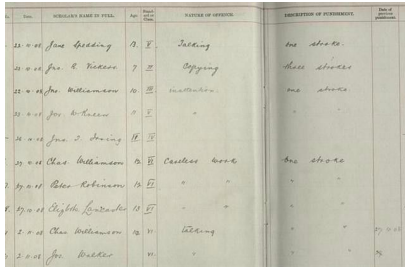
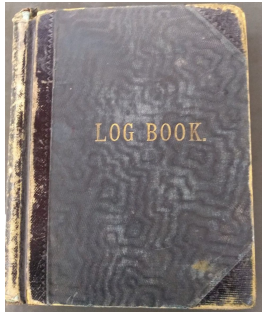
Year 5 Local History

Princess Frederica School: A day in the life of a Victorian child



The **Victorian era** was a period of great technological and social **change**. The **Industrial revolution** meant machines could now do the work of people much faster. Many people moved to towns and cities to work in factories because there were fewer jobs in **agriculture** (farming). This, and a huge population boom, resulted in very overcrowded cities and large areas of **slum** housing. Many children had to work in factories instead of attending school. Only wealthy children usually had access to good education.

The **Education and welfare acts** of the Victorian era resulted in the formation of new free schools, **Princess Frederica** being one of many to open in the local area. We can see directly what daily life was like for a Victorian child through the school's original **log book**. This documents everything from attendance to the **punishments** handed out to the children!



	Queen Victoria's reign from 1837 until 1901
Victorian era	
Industrial Revolution	A time of transformation and mechanisation.
urban	An area of towns and cities where many people live and work.
slum	Poor housing area
Workhouse	Home for the poor
cane	Stick used for punishment
school log book	A book, like a diary, usually kept by the Head Teacher which includes daily life at the school.
Governess/tutor	Home teacher for rich children

1837	1878	1880	July 24th 1889	1891	1901
Victoria becomes Queen	Factory and Workshop Act banned the employment of children under 10	Education Act made it compulsory for children up to 12 to go to school, but most children had to pay	Princess Frederica of Hanover officially opens Princess Frederica School.	Education is free and compulsory for all 5-13 year olds	Queen Victoria dies after 63 years, 7 months and 2 days (the 2nd longest serving British monarch after Elizabeth II)