

**YEAR 6 RESIDENTIAL:  
MONDAY 1<sup>ST</sup> JULY – FRIDAY 5<sup>TH</sup>  
JULY 2019**

**ROCK UK SUMMIT CENTRE**



# Why the change from France?

- far too much time spent travelling
- encourage more children to attend
- children will develop a more diverse range of skills and personal qualities

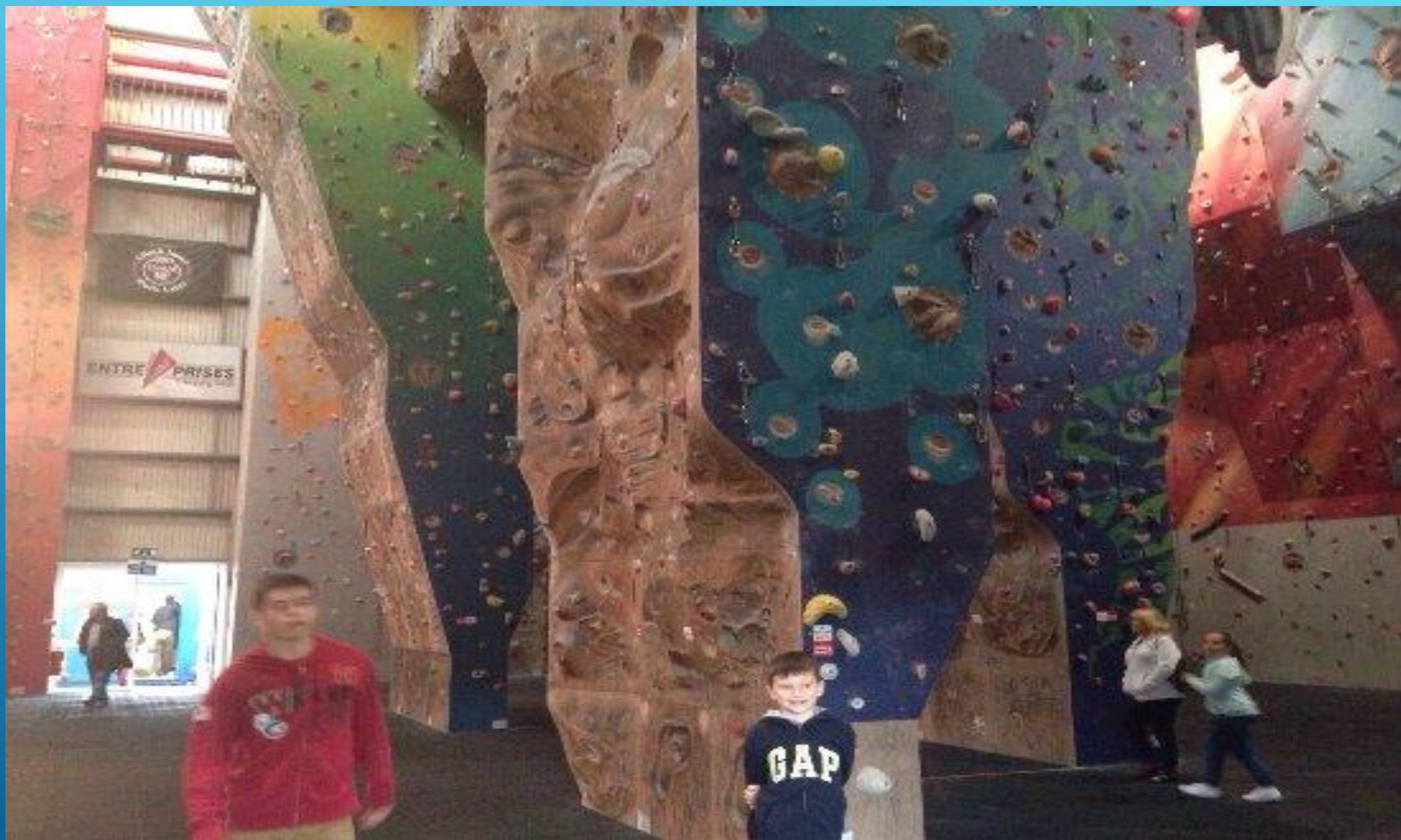
<https://rockuk.org/schools/#smooth-scroll-top>

Rock UK: Summit Centre is located in the heart of the Welsh Valleys, south of Merthyr Tydfil and is overlooked by beautiful hills and woodland.

## List of activities:

- Abseiling
- Aerial  
adventure
- Archery
- BMX riding
- Bushcraft
- Kayaking
- Caving
- Climbing wall
- Fencing
- Geocaching
- gorge walking
- high ropes
- inflatables
- mountain  
biking
- mountain  
walking
- night hikes
- orienteering
- raft building
- wide games











Day	AM	PM	Evening
Monday	Travel to centre	Induction	Settling in
Tuesday	Activities at centre	Activities at centre	Campfire/ bushcraft
Wednesday	Adventure day	Adventure day	Sports, games.
Thursday	Activities at centre	Activities at centre	Disco
Friday	Activities at centre	Travel home	

How long will the journey take?

4 hours

The coach company will then leave us for the week. Any travel undertaken during the week is provided by Summit centre.

The children will need a packed lunch for the Monday.

The centre then provides three meals a day in private canteen facilities. There are vegetarian options. Allergies will be catered to as necessary.

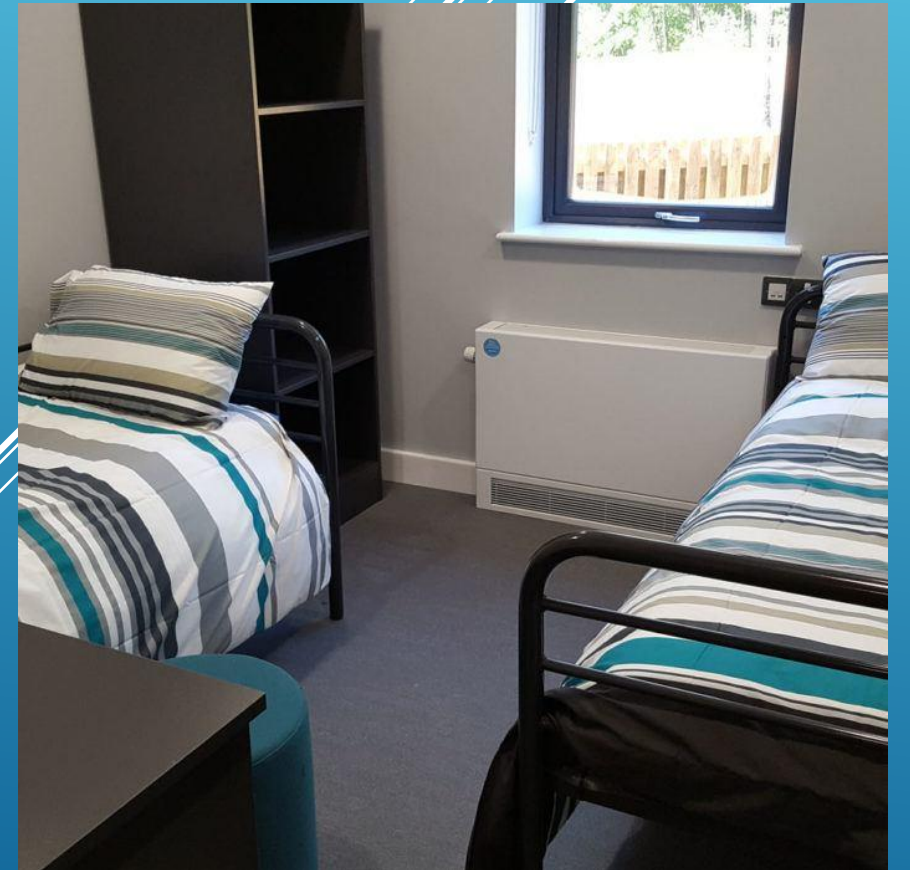


## Accommodation:

Children will sleep in dorms of between 2 and 6 (majority of dorms are for 4). Most rooms will contain bunk beds.

All rooms are ensuite.

Boys and girls in different blocks.




Cost:

Total cost is expected to be around £330 per child depending on final numbers in attendance.

Deposit of £50 will be required by 19<sup>th</sup> October (half-term break)

## Personal development:

- new skills
  - self-confidence
  - team-building
  - managing risk/developing resilience
  - problem solving
  - conquering personal challenges/overcoming fears
- 
- A decorative graphic consisting of several parallel white lines of varying thicknesses, slanted diagonally from the bottom-left towards the top-right, positioned on the right side of the slide.

Any questions?

