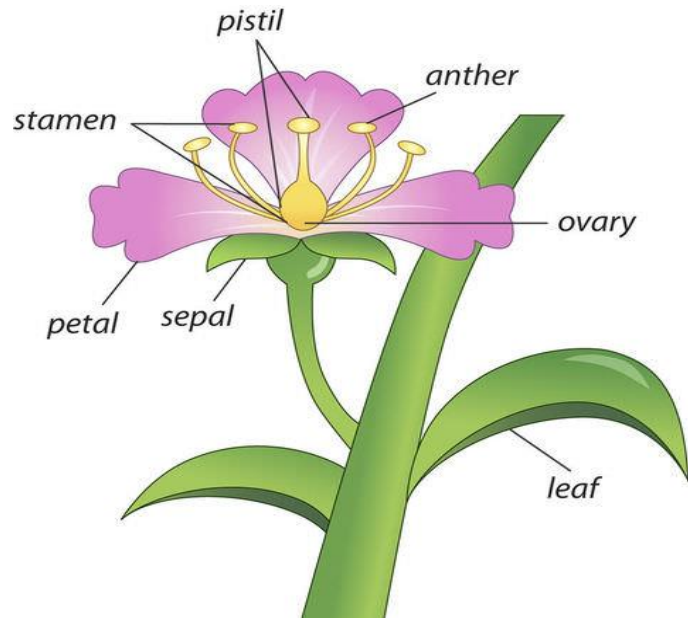




# Plants



## Key vocabulary

transported, pollination, seed formation, seed dispersal, stamen, carpel, style, sepal, ovary, anther, filament,

## KNOWLEDGE ORGANISER

Assessment question: Why is a flower important in the life cycle of a plant?

Term	Definition
pollination	Pollination is when pollen is taken between flowering plants meaning they can make seeds and reproduce
seed formation	When plants reproduce they create new seed which can then grow into a new flower.
seed dispersal	Seed dispersal is the transport of seeds away from the parent plant.

## Water Transportation

From the roots the water is taken up through thin tubes in the stem called **xylem**. These tubes act like straws and draw the water up through the stem to the leaves and flowers.

