

Wednesday, 16 October 2013

Update on the expansion

In July a statutory consultation started in response to a request from the Brent Council to expand Princess Frederica. On Monday 30th September 2013, the Governing Body agreed that **subject to satisfactory closure** of certain conditions, they would support expanding the school. As a result on Wednesday, 16 October 2013 a notice will be issued by Brent Council confirming that in principle the Governing Body is in favour of expanding the school. This notice will not mention the issues that need to be resolved, but it does give the school and public communities a further opportunity to comment on the proposed expansion.

As the statutory notice from Brent does not provide some of the important details under discussion by the Governing Body, we want to tell you more about them here.

The Governing Body remains positive about the proposals to expand, with certain conditions. In the meantime, Brent Council has agreed to fund all costs, even if the expansion proposal is refused at the last minute. As there are many children without school places right now, work on the plans and associated agreement has continued over the summer holidays to avoid delaying construction when **and if** the Governing Body sign an agreement to proceed.

Brent Council last week confirmed that the expansion can only take place with a legally binding *Development Agreement* being signed by ALL parties – the Council, the London Diocesan Board for Schools which owns the school/ site, and the Governing Body. This will include a construction contract. It will also cover important conditions set out by the Governing Body that relate to issues at the heart of the discussion around whether or not to expand including:

- **The process and planning to minimise disruption to the school should a build take place**
- **Safe and well-managed access to the school both during and after construction**
- **Options for a transport/ traffic plan (NB: it should be noted that the Highways Agency has most influence here and will be involved in**

Background information to the statutory consultation process

Although Brent Council are proposing the expansion of the school, and taking the lead, legally the Governing Body was required to ask Brent Council to run a statutory consultation to enable members of the public to object to or make comments on the proposed change to expand the school.

Brent Council then launched the statutory consultation in July, 2013 following the five informal consultation meetings run by the school. Initial comments and responses from Brent Council can be reviewed on our school website from Friday 18th October, 2013.

Brent Council will be issuing a further notice about this consultation on Wednesday, 16 October indicating that the school is proposing to expand. However, it is important to note that the notice is a standard form and so detail about important issues raised by the Princess Frederica Governing Body that need to be addressed cannot be included. The statutory notice gives further opportunity for comment. It may also be useful to note that irrespective of the findings of the consultation, no expansion can take place without the final agreement of the Governing Body and Planning Permission via the standard routes:
<http://www.brent.gov.uk/services-for-residents/planning-and-building-control/>

The most detailed and accurate information about the proposed expansion can be found www.princessfrederica.brent.sch.uk/school-expansion.html

considering the planning permission application)

- Clearly defined and controlled budgets
- Clearer information regarding demand for school places in the area local to the school, not just the Borough.
- Key design elements incorporated into the plans that will not be negotiable (which means that the expansion will not go ahead if planning/ other permissions cannot be secured for them).

Applying for and obtaining planning permission can be a lengthy process. The Governing Body has therefore now agreed a formal version of the expansion plans that were shared at the consultation meetings before the summer holidays. Brent Council will submit a planning application in the near future. Key features of the plans include:

- Nursery/ Y6 in a separate block with a roof top multi-use games area
- A hall large enough for the whole school
- Demolition of the existing 1960s halls/entrance and kitchen block and addition of a new entrance and offices, taking up a much smaller area.

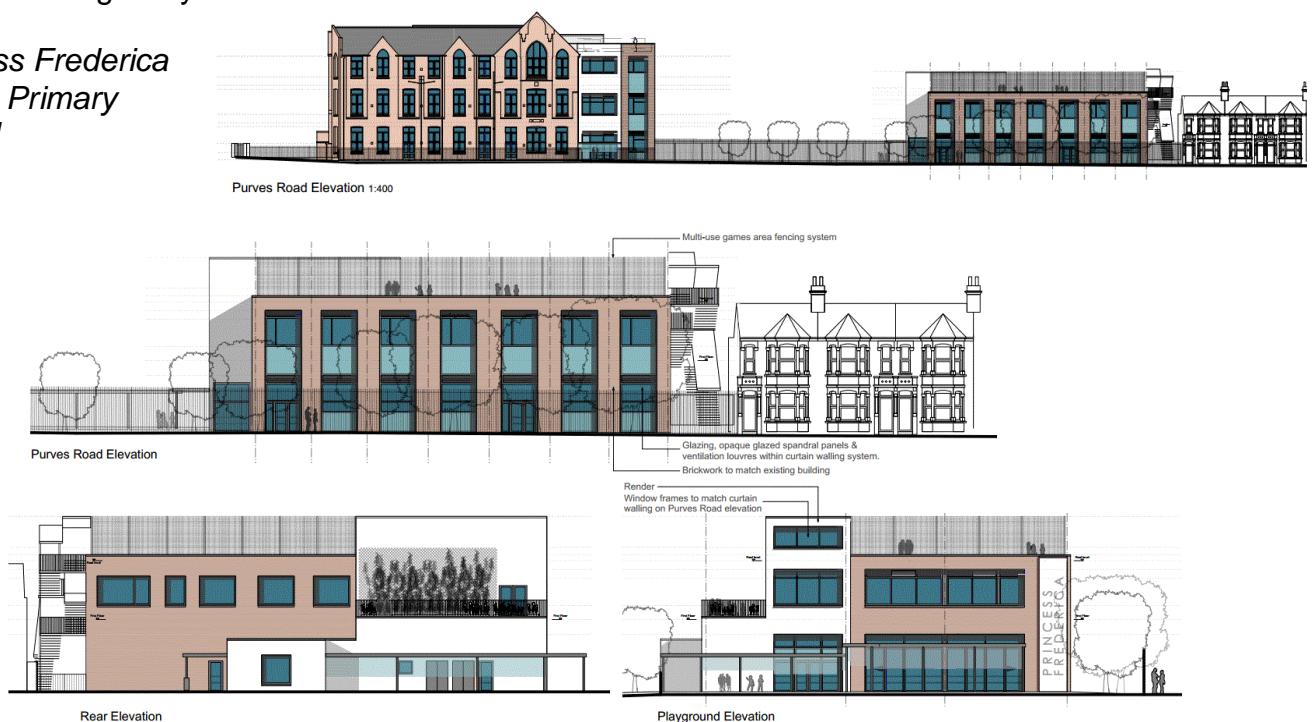
Submitting the planning application will also give neighbours and the local and school communities an important opportunity to comment on the detailed expansion plan via the standard planning process: <http://www.brent.gov.uk/services-for-residents/planning-and-building-control/>

The Governing Body is continuing with the expansion proposals and planning in good faith, not least because it will not be possible to have answers to some of the important conditions until it is further into the process. The Governing Body will continue to review all comments and considerations that arise and these may influence any final decision.

Should the expansion go ahead, it is hoped that planning permission would be secured early in 2014 and that building would start soon afterwards with the most disruptive work taking place during the school holidays. We will continue to keep you updated as and when there is any significant news.

The Governing Body

*Princess Frederica
CE VA Primary
School*



Impressions of what the expanded school might look like if the project goes ahead